



SRI
ADITYA
L U X U R Y

VANTAGE*

OUR DESTINATION.....

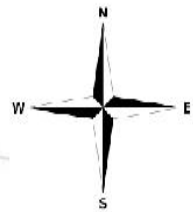


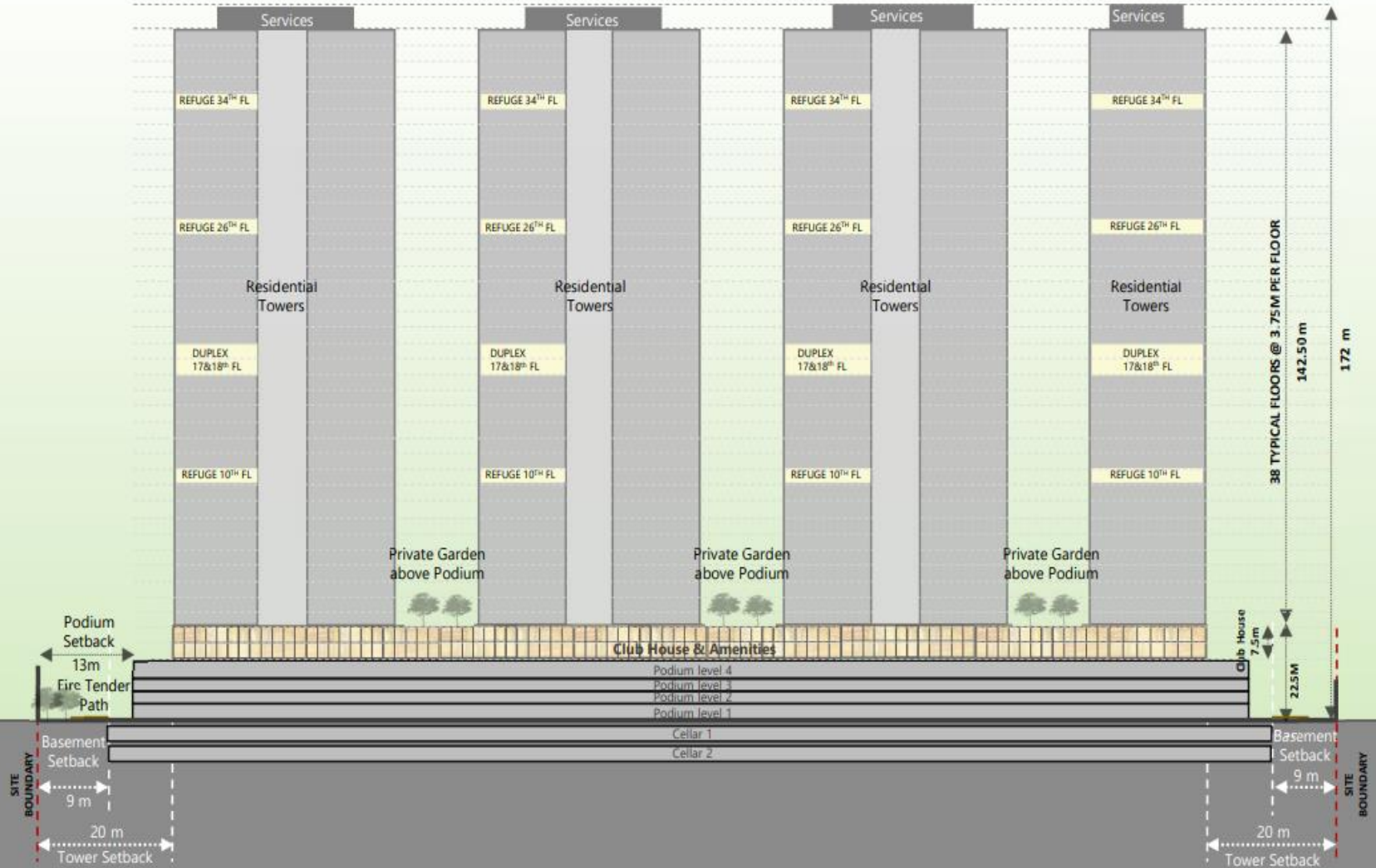
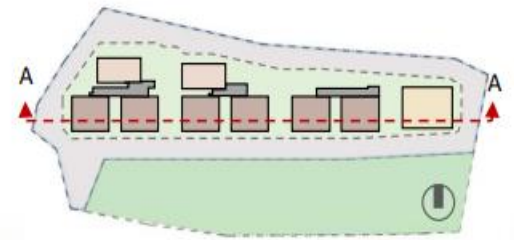
OUR PLAN

Our Plan



- | | | |
|-------------------------|-------------------------|---------------------------|
| 1 Lobby | 6 Basketball Court | 11 Meditation / Yoga Zone |
| 2 Dense Urban Forest | 7 Amphitheatre | 12 Grand Riverwalk |
| 3 Cricket Practice Nets | 8 PArty Deck | 13 Sculpture Park |
| 4 Aroma Garden | 9 Outdoor Lounge | 14 Elderly Exercise Zone |
| 5 Tennis Courts | 10 Outdoor Fitness Area | |







CLUB HOUSE

- | | | |
|------------------------------|-----------------------|--------------------|
| 1 Lobby | 10 Multi-purpose hall | 19 Salon |
| 2 Virtual Golf | 11 Cafeteria | 20 Theatre |
| 3 Squash court | 12 Pool | 21 Guestrooms |
| 4 Outdoor Fitness area | 13 Barbeque deck | 22 Library |
| 5 Outdoor play area for kids | 14 Outdoor work deck | 23 Zen garden |
| 6 Fitness centre | 15 Sculpture park | 24 Yoga deck |
| 7 Gym | 16 Bar & Lounge | 25 Reflection pool |
| 8 Amphitheatre | 17 Sunset deck | 26 Kitchen |
| 9 Pre-function deck | 18 Open Air Jacuzzi | |

The clubhouse is meant to be busy throughout the day, making it a natural social gathering spot. It offers a variety of activities to its visitors while overlooking the Musi River. The clubhouse's activities are segmented to enable a smooth transition between active, passive, and relaxing zones.





***Grand triple
level Arrival
Lounge
welcomes you
to the lap of
luxury.***

TOWER - 1



[illegible]

TOWER - 3





13000 SFT – TYPE C

TOWER - 4

THANK YOU